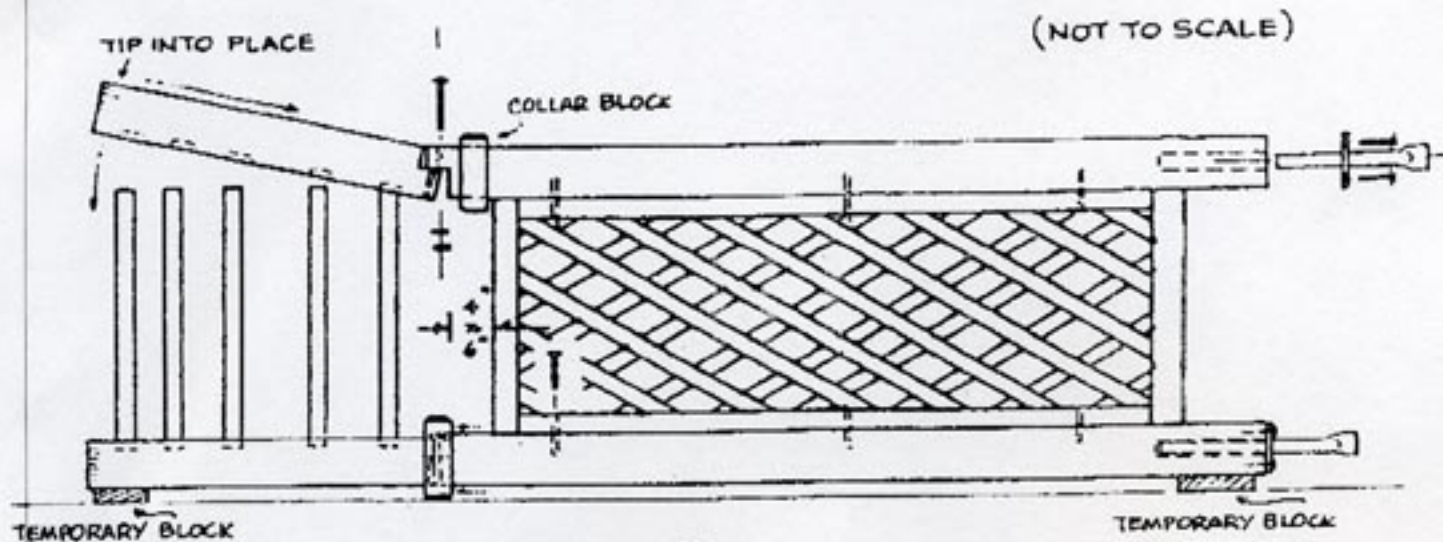


Thank you for purchasing this Centre Island Cedar Products Ltd. Arch.
We hope you'll enjoy it for many years.



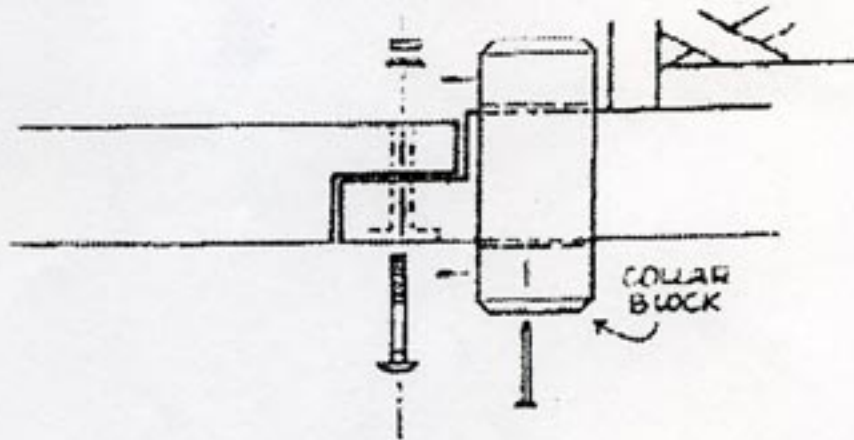
(A)

MATERIALS

- 2 lattice screens
- 4 posts
- 2 arches
- 8 dowels
- 4 moulding collars

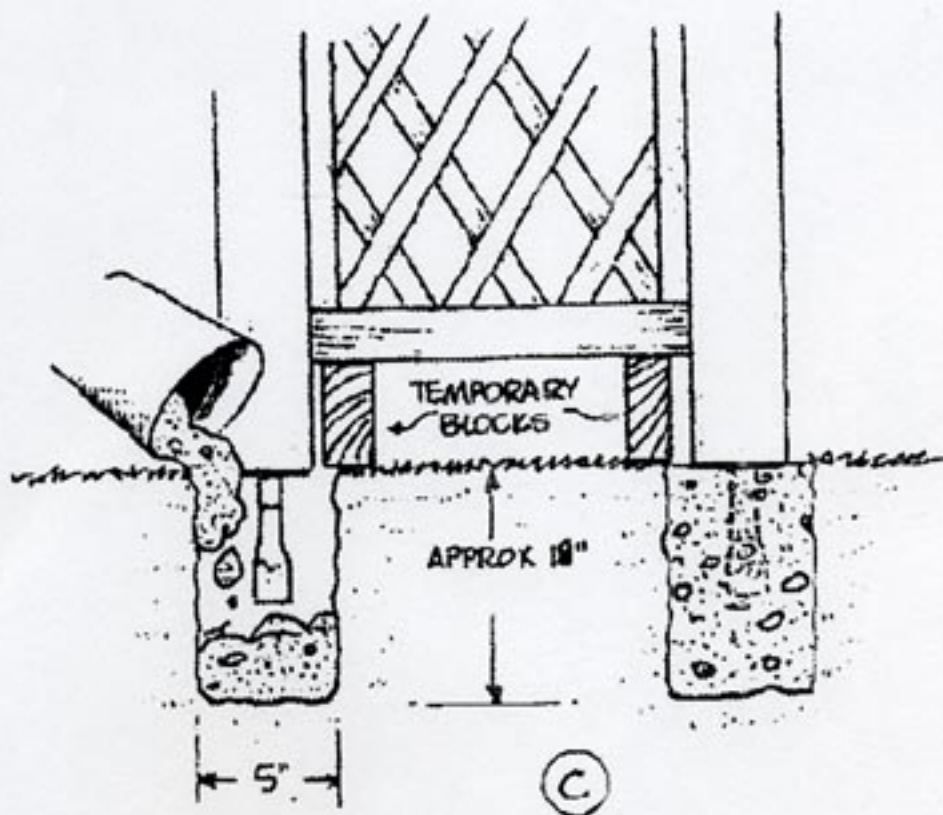
HARDWARE

- 20 wood screws
- 8 bolts c/w nuts & washers
- 16 galv. casing nails
- 4 galv. conc. anchors



(B)

1. Screw lattice sides to posts as shown in "A" (3 screws each side of each panel). Be sure notch in posts are as shown.
2. Slide 4 moulding collars over tops of posts and bolt first arch in place with 4 bolts as at "B" (just snug bolts for now).
3. Stand dowels in predrilled holes.
4. Tip into place and bolt second arch.



5. Drive anchor irons in bottom of posts and screw with 2 screws each.
6. Stand arch over 4 pre-dug holes, block and shim until arch stands plumb and level. Fully tighten 8 top bolts.
7. Cast 4 pre dug holes with concrete.
8. Slide moulding collars up to the cover joints at post tops and secure with 4 galv. casing nails.